

অসম চৰকাৰ



Government of Assam

Department of Excise



OFFICE OF THE CHEMICAL EXAMINER EXCISE
DEPARTMENT OF EXCISE , GOVT. OF ASSAM BAMUNIMAIDAN , GUWAHATI , KAMRUP (M)

অসম চৰকাৰ



Government of Assam

Department of Excise



About Us :

- We do chemical testing of IMFL (Indian Made Foreign Liquor), Excise Warehouse Sample, "*Ganja*", ENA (Extra Natural Alcohol). Our Chemical Examiner share his opinion on the basis of above testing whether the sample is in ISI standard or not . In case of the presence of the "Sediment" , the sample is rejected for further process since it is harmful for human body .
- Assam Excise Department is one of the biggest Revenue Collection wing of Govt. of Assam . We play a vital role under this esteemed Department by collecting revenue from the Distillery Houses for each & every Chemical Testing.





Reporting :



Report Preparation and final submission



Processing: Stepwise



Distillation of the Sample



Determination of Specific Gravity of the sample



Determination of Volatile Acids by Volumetric method

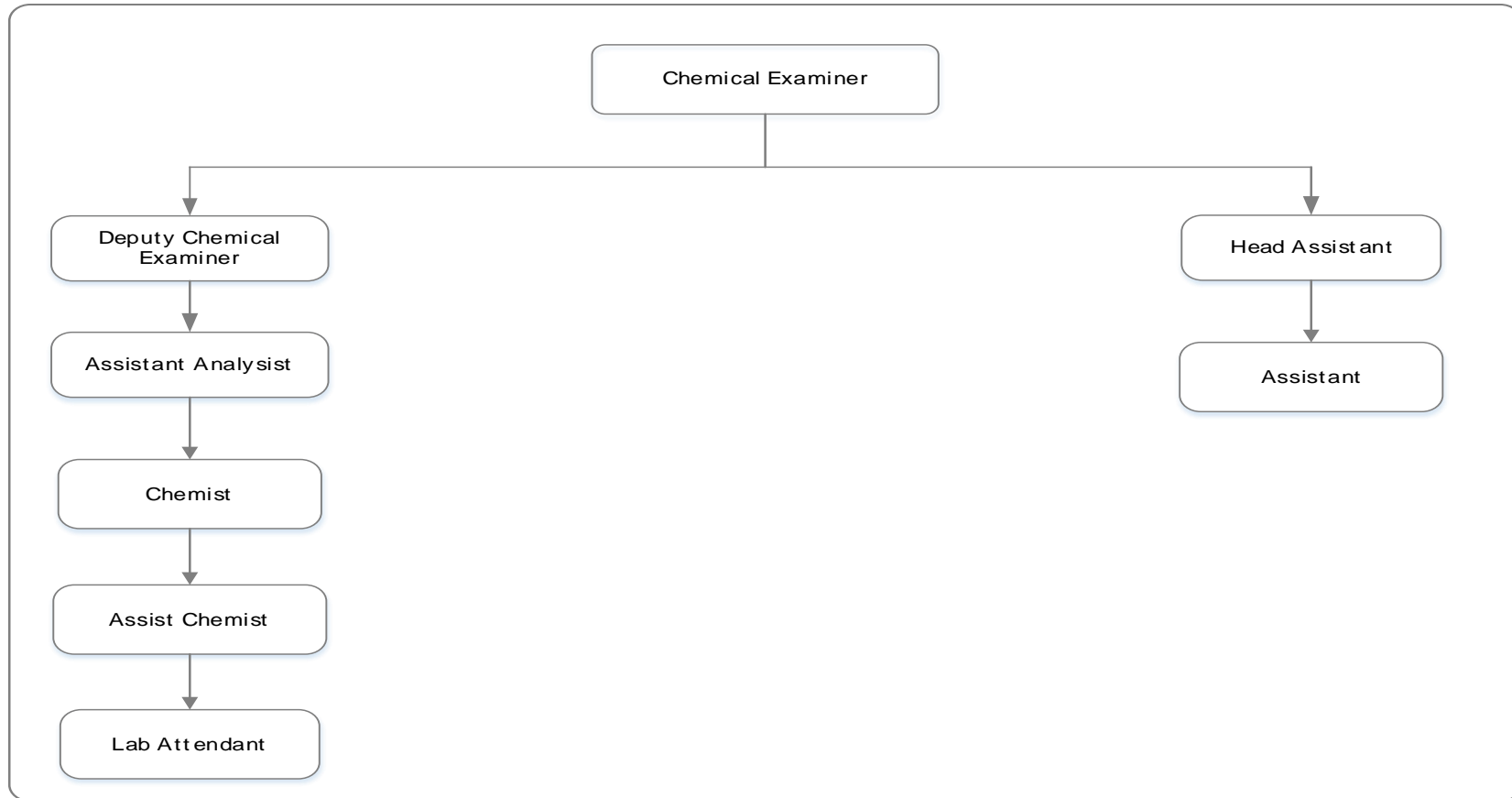


pH Determination using pH meter



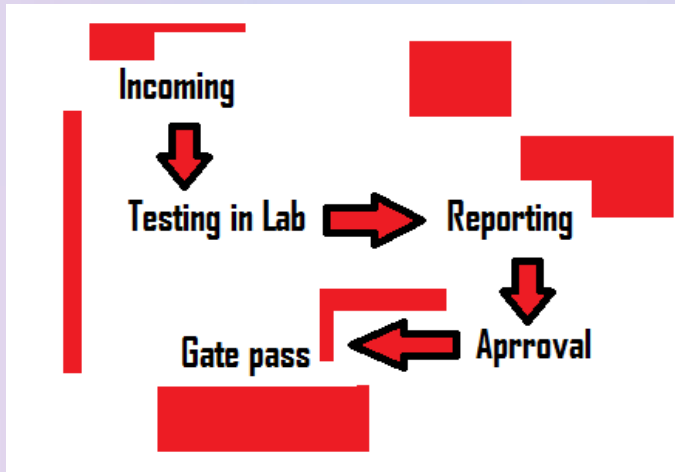
Sample undergoing Reflux on a water bath for determination of Esters

ORGANIZATION SETUP OFFICE OF THE CHEMICAL EXAMINER





Process flow Chart -



1.1.1 OFFICE OF THE CHEMICAL EXAMINER OF EXCISE, ASSAM

THE FIGURE BELOW SHOWS THE STAFFING AND THE REPORTING RELATION AND DEPICTS THE DISTRIBUTION OF FUNCTIONS OF OFFICE OF THE CHEMICAL EXAMINER OF EXCISE

FIGURE 1: ORGANIZATION STRUCTURE, OFFICE OF THE CHEMICAL EXAMINER OF EXCISE

1.1.2 Office of the Chemical Examiner of Excise

The organization is headed by the Chemical Examiner, Excise who works under the supervision of the Commissioner of Excise, Assam. Their activities include chemical analysis of various liquor samples and other intoxicating drugs samples sent from various districts of the state.

The key officers posted at the Chemical Examiner office, including Chemical Examiner, Deputy Chemical Examiner, Assistant Analyst, Chemist, Assistant Chemist, Lab Assistant, Head Assistant and Assistant. At present, post of Chemical Examiner is vacant, Addl. Commissioner of Excise is the In-charge of the position of Chemical Examiner.

The number of sanctioned posts for the Chemical Examiner office is 13, out of which 07 are filled and remaining 06 posts are vacant. Below table shows the manpower deployment status at the "Office of the Chemical Examiner of Excise".

| Sr.No. | Designation | Number of Sanctioned Posts | Number of Posts Filled | Number of Posts Vacant |
|--------------|--------------------------|----------------------------|------------------------|------------------------|
| 1 | Chemical Examiner | 1 | 0 | 1 |
| 2 | Deputy Chemical Examiner | 1 | 0 | 1 |
| 3 | Assistant Analyst | 1 | 0 | 1 |
| 4 | Chemist | 2 | 2 | 0 |
| 5 | Assistant Chemist | 6 | 3 | 3 |
| 6 | Lab Assistant | 2 | 2 | 0 |
| TOTAL | | 13 | 7 | 6 |

Table 1: Staffing Details: Office of the Chemical Examiner of Excise